

New!!  
New!!  
New!!

2  
NEW KPW  
CHAPTER!



3  
CONFERENCE  
IN TOPEKA!



4  
KEEP CURRENT  
WITH THE FIRST  
AMENDMENT

K A N S A S P R E S S W O M E N

# communiKPW

DECEMBER - JANUARY 2002

## Contest deadline looms...



### OOPS!

A MAJOR oversight in the last newsletter left **Grace Wilson** off the list of winners in the National Federation of Press Women's 2001 communications contest!

Grace received a second place in the "Public Relations for the Public Good" category.

*Way to go, Grace!*

With much pleasure, I (Mary Ann Clift, KPW President) am announcing that Gerry McDonald and Thelma Tolliver of Dodge City will direct the 2002 KPW communications contest.

And a statewide team of volunteers has been created to oversee the rest of the contest.

Current volunteers on the team include Nancy Trowbridge (initial press release; postcard notice to winners); Liz Kennedy (sorting by category); Sue Novak (winners list, final press release, certificates); Beth Bower (liaison with *Wichita Eagle* for sweepstakes award); and Mary Ann Clift (judges, sorting by category).

By the time you receive this newsletter, you probably will have received a packet of contest information from Gerry and Thelma.

To summarize, here are the highlights.

Key changes are the new deadline of Monday, Jan. 7, 2002,

and dropping the requirement for duplicate entries. Instead, we ask that entrants retain a duplicate copy for their own records.

As in the past, payment of entry fees and a summary fee sheet must



### Communications contest deadline is Jan. 7, 2002!

For more information or contest rules and entry forms, call

Gerry McDonald, 620-369-2881, or Thelma Tolliver, 620-227-8302.

accompany entries, each of which must have its own entry form.

Fees for members remain \$12 per

entry for the first five entries, and \$9 per entry for six entries or more.

To participate in the contest at the member rate, you must pay your state and national dues NO LATER than February 1, 2002.

By making your dues payment by January 1, you can help KPW's budget stay on track.

NFPW contest guidelines can be accessed through the national Web site at <http://www.nfpw.org>.

If you want to suggest changes in the contest for next year, please let Gerry, Thelma or me know so that we can pass them on.

Non-members may enter the state contest for \$30 per entry, but cannot compete at national unless they join. Please spread the word to your colleagues about our communications contest. It can be a great membership recruiting tool.

If each of us recruited just one new member, our organization would be twice as strong.

(See *LET THE...*, page 3)

# BITS&PIECES



## More new members!

Welcome to our newest KPW members:

**BETSY DEMARS**  
12310 Quarry Road  
Milford, KS 66514  
betsydemars@hotmail.com

**MICHELLE HALL**  
1807 College Heights, #7  
Manhattan, KS 66502  
785-587-8280

**MARY SPIRO LEVIN**  
1409 Humboldt Street  
Manhattan, KS 66502  
785-587-8280

**SHEILA SMITH**  
126 West Elm Street, #802  
Junction City, KS 66441  
785-238-0926 (H)  
785-762-5000, ext. 122 (W)  
sheilaloraine@yahoo.com

### Welcome!

**Jean Carter** is manager of Communications for the Coleman Company at 37th and Hydraulic in Wichita. She is responsible for developing a communications program for the company. Her number is 316-832-3090.

**Faith DeVaux**, Topeka, author of *When Duty Calls*, made several appearances in Wilmington, N.C., in November to support her book.

She also was featured at a Barnes and Noble book-signing, and participated in the Veterans' Day program aboard the Battleship North Carolina.

**Debbie Elmore** has been named Director of Communication and PR for Via Christi Senior Services in Wichita.

You can reach her at 316-689-4000, ext. 283.

**Jeff Goudie**, Topeka, recently reviewed Jacqueline Guidry's novel, *The Year the Colored Sisters Came to Town*, and Sue Miller's novel, *The World Below*, for the *Kansas City Star*.

**Wichita Press Women** announce their latest incentive.

Starting in 2002, first-time visitors to Wichita Press Women meetings will receive a lunch discount

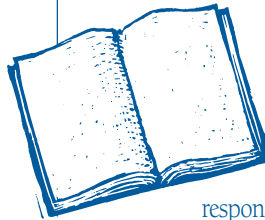
and pay only \$5 to attend.

"I'm hopeful that they will like the group and the program so much they will want to join WPW," said president Teresa Veazey.

**Becky Peak**, Great Bend, has become Recreation Program

Specialist for the Hoisington Recreation Commission (HRC).

Her new responsibilities include



**YOU'RE INVITED!**

creating brochures and press releases for the HRC in addition to fund-raising, and recruiting and training employees! Becky also will be teaching Introduction to Broadcasting at Barton County Community College, Great Bend, this spring.

Several articles with the bylines of **Colleen Brink**, Wichita, **Mary Ann Clift**, Topeka, **Lou Ann Thomas**, Oskaloosa, and **Grace Wilson**, Topeka, have been published recently in the *Wichita Eagle's* Active Life section.

**Aileen Mallory's** article, "A Paper is a Family Affair," will be published in *County Woman* magazine, formerly *Farm Wife News*. Aileen is from Topeka.

**Eleanor Bell**, Topeka, presented a program at the Unitarian Universalist Fellowship, "Spiritual Duct Tape: Mending a Life," based on her unpublished book, *Secondhand Rainbows*.

Articles by **Sue Novak**, Topeka, entitled "99 Bottles of Beer Behind the Wall" and "The Road Less Traveled (Route 66)," appeared in the summer and fall issues of *Kansas Heritage*.



**KPW**

## New KPW chapter!

Announcing a brand new KPW chapter! The Flint Hills chapter, with members from Junction City, Manhattan and Abilene, met in October to organize.

The brave and bold new chapter comprises Gail Parsons, president; Michelle Hall, vice president; Betsy DeMars, secretary; Mary Spiro Levin, treasurer; and Vivien Sadowski, Carol Hockersmith and Sheila Smith, members-at-large.

Any other current KPW members and any women or men in communications in the Flint Hills area are welcome and encouraged to join! Way to go, ladies! And the best of luck!

KPW: Thanks so much for all your support during this time of loss for me and my family. The KPW memorial gift will be used for a special project in the church in Arkansas where my mother raised us.

Sincerely,  
Mary Ann Clift



## MEMBER BENEFITS

Don't forget to apply for a Kansas Press Women mini-grant for professional development.

This program enables all members in good standing to apply for up to \$100 in reimbursement for the cost of educational programs.

KPW members may apply in advance or after a professional workshop by submitting a request in writing.

Include a copy of the receipt or check, a copy of the program or promotional brochure, and when and where you participated in the program.

To apply or ask questions, contact Nancy Trowbridge, 785-286-0825, [trowby@networksplus.net](mailto:trowby@networksplus.net).

## Let the competition begin!

(Continued from front page)

Finally, I want to acknowledge Sally Snell's yeoman efforts over the past two years at setting up and running the online entry system. We are reverting to hard-copy entries because there were simply too many differences in equipment and software, and too much variation in computer expertise within our

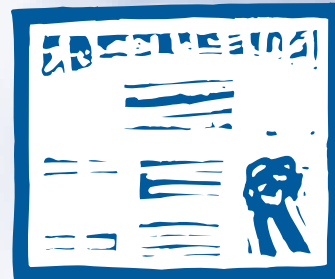


membership to continue that system for now.

OK, now, it's up to you! Spend some time over the holidays assessing your year's work and pulling out your best pieces to enter.

Let the competition begin!

-Mary Ann Clift, KPW President



## Highest honors!

The **CommuniKPW** recently won a **CLARUS**, the top award in the Great Ideas category, from the Kansas chapter of the Public Relations Society of America.

Contributing to the winning entry was Sheila Lucia, senior account executive and **CommuniKPW** editor, and Jane Lee, APR, both of Jane Lee Communications.

**CommuniKPW** will be published on a quarterly schedule beginning with the March 2002 issue.

## Conference on Friday!

It's official! And it's exciting!

In a trailblazing move, the KPW board voted to move the spring conference meeting to a Friday! Previously, the conference was on the weekend.

The decision is an attempt to boost attendance by moving the conference to a weekday.

This year's conference, hosted by the Topeka Press Women, is scheduled for **Friday, May 3**.

Conference planners already have booked the Kansas State Historical Society's Mission building as the meeting location.

Programming is leaning toward public relations, ethics and copyright law, publishing/self-publishing, and how college newspapers presented the Sept. 11 catastrophe and related events.

Sue Novak, Topeka Press Women president, is spearheading the conference committee. If you have any conference ideas or suggestions, please give Sue a call at 785-272-8681, ext. 250, or e-mail her at [snovak@kshs.org](mailto:snovak@kshs.org).

Watch for more conference details in the next issue of *CommuniKPW*!



## REGIONAL MEETINGS

### WICHITA

PRESS WOMEN,  
FIRST WEDNESDAY  
OF THE MONTH  
AT 11:45 A.M.,  
AT BOTANICA, THE  
WICHITA GARDENS,  
701 AMIDON.

MEMBERS: \$7.50  
STUDENTS: \$5  
FIRST-TIME  
VISITORS: \$5

CALL 316-942-5385

### TOPEKA

PRESS WOMEN,  
FOURTH TUESDAY  
OF THE MONTH  
AT 11:45 A.M.

COST AND  
LOCATION VARY.

CONTACT SUE NOVAK.  
SNOVAK@KSHS.ORG

CALL DISTRICT  
DIRECTORS FOR  
OTHER AREAS.

# Who's watching the First Amendment?

You should be.

Does the following summary of public attitudes bother you?

- More than half of respondents to a survey believe the press has too much freedom.
- Half believe the Constitution should be amended to override the First Amendment's protection of flag-burning as political protest.
- Nearly one-third believe the First Amendment goes too far in the rights it guarantees.

This analysis from the Freedom Forum's 1999 survey of the state of the First Amendment concludes that the public misunderstands the purposes of the First Amendment.

If you believe First Amendment freedoms are important, join the National Federation of Press Women (NFPW) First Amendment Network (FAN).



Then watch your e-mail for alerts about First Amendment and open government issues.

That's your cue to speak out. Notices will tell you when and where your voice can be

heard to help protect freedom of speech.

First Amendment Network participation is *free* to all NFPW members. Non-members may join the FAN network for \$100 per year

To sign-up call NFPW at 800-780-2715 or e-mail [presswomen@aol.com](mailto:presswomen@aol.com).



## BOARD MEMBERS

### President

Mary Ann Clift, Topeka

### VP Membership

Jane Lee, Hutchinson

### Second VP Bylaws

Carolyn Dvorak

### Treasurer

Sue Novak, Topeka

### Secretary

Rebecca Peak, Great Bend  
(Executive committee)

### East District

Melanie Kitchner, Topeka  
785/234-9336

### North Central District

& Past President  
Carol Hockersmith, Manhattan  
785/587-9357

### Northwest District

Linda Kenyon, Great Bend  
620/792-1211

### South District

Teresa Veazey Heying, Wichita  
316/978-6413

## NITTYGRITTY

*CommuniKPW* is a bimonthly publication of Kansas Press Women, an affiliate of the National Federation of Press Women.

### KPW President

Mary Ann Clift  
5008 SW Brentwood Road  
Topeka, KS 66606-2210  
785-273-9992 (W)  
E-mail: [mac@editwrite.org](mailto:mac@editwrite.org)

Next news deadline:  
February 15, 2002

### News items should be sent to:

Sheila Lucia, Editor  
P.O. Box 2767  
Hutchinson, KS 67504-2767  
620-662-0076 (W)  
Fax: 620-662-1221  
E-mail: [janelee@alltel.net](mailto:janelee@alltel.net)

## communiKPW

P.O. Box 2767  
Hutchinson, KS 67504-2767

RETURN SERVICE REQUESTED

PRSR STD  
U.S. POSTAGE  
PAID  
HUTCHINSON, KS  
PERMIT NO. 227

WANT TO JOIN KPW?

CALL THE DISTRICT DIRECTOR

NEAREST YOU! SEE PHONE

NUMBERS BELOW.