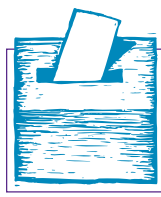




2
WEB
SOURCES



3
BITS
&
PIECES



4
CONTESTS,
CONFERENCES,
& SEMINARS

KANSAS PROFESSIONAL COMMUNICATORS

communiKPC

S P R I N G 2 0 0 4



Mark that date!

MARCH 20

10 a.m.

Board Strategy Retreat
Kirby House, Abilene

MAY 7

6:30 p.m.

Board meeting
Holiday Inn Express, Abilene

MAY 8

Annual KPC Conference
Holiday Inn Express, Abilene

Awards Banquet
Brookville Hotel

SEPT. 9-11

NFPW Conference
Lexington, Ky.

SEE BACK PAGE

for upcoming contests,
conferences and seminars

Are you a FAN member?

Who's watching the First Amendment? You should be.

Does the following summary of public attitudes bother you?

- More than half of respondents to a survey believe the press has too much freedom.
- Half believe the Constitution should be amended to override the First Amendment's protection of flag-burning as political protest.
- Nearly one-third believe the First Amendment goes too far in the rights it guarantees.

This analysis from the Freedom Forum's 1999 survey of the state of the First Amendment concludes that the public misunderstands the purposes of the First Amendment.

If you believe First Amendment freedoms are important, join the National Federation of Press Women's (NFPW) First Amendment Network (FAN), sponsored by the NFPW.

To join, just send an e-mail to NFPW at presswomen@aol.com.

After joining, you will receive periodic e-mail messages advising you of legislative or executive-branch



matters that NFPW believes require attention. Then, watch

Interested in becoming a FAN member?

Contact NFPW at presswomen@aol.com

your e-mail for alerts about First Amendment and open government issues. That's your cue to speak out. The notices will tell

you when and where your voice can be heard to help protect freedom of speech.

If you decide to participate, you may send a letter to your member of Congress...ask KPC to pass a resolution on a certain issue...or mobilize other types of support for the First Amendment.

The opinion you express will be your own. But you will join your fellow NFPW members in speaking up at critical times on critical issues.

Participation in FAN is **free to NFPW members!**

Cost to nonmembers is \$100 a year. Inquire at NFPW headquarters if you know someone who is interested.

Educating readers, viewers and voters on the role of free speech and a free press in American society is one of the greatest contributions an NFPW member can make.

Questions about FAN?
E-mail info@nfpw.org.



RENEW...WE NEED YOU!

As my term as president draws to a close, I feel as if Kansas Professional Communicators is on the verge of making big strides in terms of growth.

We have changed our name to more accurately reflect our membership... we have a new logo... our Web site is near completion...and new materials are on the horizon.

We've participated in an extremely valuable retreat, and now we are poised to take that information and transform it into a strategy for growth. (Feb. 7 retreat rescheduled for March 20 due to snow!)

Speaking of growth, an important part of growing is maintaining our own membership. If you haven't sent your renewal to NFPW, please do so today.

Remember, we are the only statewide professional organization representing the diversity of the communications industry. What great networking contacts you have throughout the state, and nation!

Don't forget the annual conference, competitions, leadership opportunities, professional development, NFPW's First Amendment network that allows

you to help protect this important freedom, mini-grants and so much more.

And I always come back to the networking. Have you ever belonged to an organization where members are so supportive of each other...helping each other find jobs...giving feedback and advice? We're not competitors. We encourage and contribute to every other member's efforts to grow professionally and personally.

So, please, renew today if you haven't already done so. The best is yet ahead for KPC...and you!



PRESIDENT'S PERSPECTIVE



NEW

MEMBER!

Welcome to our newest KPC member!

CHERYL MILLER

Assistant to the Dean for College Outreach
Fairmount College of Liberal Arts and Sciences
Wichita State University
1845 Fairmount Street
Wichita, KS 67260-0005
316-978-6659
cheryl.miller@wichita.edu

We're glad you're one of us!

WEB SOURCES

Still don't spend enough time on the internet? Check out these sites:



In partnership with the September 11 Digital Archive Project, the Library of Congress has launched a new interactive Web site, "Contribute Your Story," accessible through a link on the Library's "Witness and Response" online exhibition.

www.loc.gov/exhibits/911/



TechSoup.org is a technology site providing software and other technology products exclusively to nonprofits for a small

administrative fee. Find out more.

<http://click.topica.com/maaaWFhaaWQX1bakg0Wb/>



GrantsAlert helps nonprofits, especially those involved in education, secure the funds needed to continue their important work.

www.grantsalert.com/



The Heritage List is aimed at those interested in the collection, preservation, and/or interpretation of our Kansas heritage. This list is maintained by the Kansas State Historical Society and the University of Kansas.

To subscribe to the list, send an e-mail to listproc@ku.edu. In the body of the message type SUBSCRIBE HERITAGE, your e-mail address and name. Leave the subject line empty.



To receive your own copy of "For Writers," the e-mail newsletter for writers, e-mail editor Jennifer Lawler at: jennifer@jenniferlawler.com.



SchoolGrants has compiled an excellent set of grant writing tips for those needing help in developing grant proposals.

www.schoolgrants.org/tips.htm



BITS & PIECES

KPC nominating committee members have been selected: Becky Funke, Wichita, Jeff Goudie, Topeka, and Carol Hockersmith, Manhattan.

If you have suggestions for KPC members you'd like to see take office in May, contact one of the committee members.

If you couldn't make the Feb. 7 board meeting, you have another chance!



Due to wintery conditions and icy roads, the meeting was postponed until Saturday, March 20.

As before, we're devoting the entire meeting to strategizing. And all members are welcome to participate in this critical session.

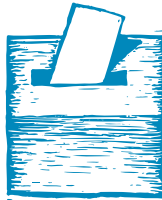
We're meeting 10 a.m. to 3 p.m. at the Kirby House in Abilene.

Let Jane Lee know if you plan to attend. (jane@janeleecomm.com)

Wichita Professional Communicators elected officers for 2004:

PRESIDENT: Shannon Littlejohn
PRESIDENT-ELECT: Carl Williams
VICE PRESIDENT/PROGRAMS: Teresa Veazey
VICE PRESIDENT/MEMBERSHIP: Nancy Lucas
TREASURER: Nancy Wiebe
SECRETARY: Beth Hershberger

One-, two- and three-year board members at large: Judy Conkling, Carreen Simon and Beth Bower.



Flint Hills Press Women also elected a new slate of officers:

PRESIDENT: Desiree Andrews
VICE PRESIDENT: Laura Stroda
TREASURER: Gail Parsons
SECRETARY: Linda Gilmore

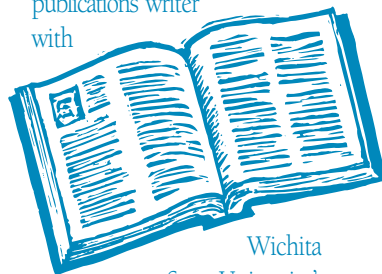
Grace Wilson, Topeka, is the new editor of the ERC Resource and Referral's newsletter *ERC NOW!*

Grace, a freelancer, edits and designs the quarterly publication.

ERC Resource and Referral is a nonprofit organization dedicated to providing resource and referral services to persons in northeast Kansas with special emphasis on child care, employment and affordable housing.

Our sympathies to member **Becky Funke**, Wichita, whose mother died in late December.

Shannon Littlejohn, Wichita, is working part-time as a publications writer with



Wichita State University's Communications office.

Faith DeVeaux, Topeka, was featured on "Sunflower Journeys" on KTWU for her work on a book and documentary on the life of Bishop Gregg.

A book review by **Sue Novak**, Topeka, appeared in the Winter 2003-2004 issue of *Kansas History*.

She reviewed the book, *Driving across Kansas: A Guide to I-70*, by Ted T. Cable and Wayne A. Maley.

And her article, "Come Take a Trip in My Airship," on the history of air travel in Kansas, appeared in the Winter 2003 issue of *Kansas Heritage* magazine.

Teresa Veazey, Wichita, traveled to western India in January as part of a Rotary International Group Study Exchange team.

Her group toured the region while making presentations about Kansas to Rotary Clubs in the area.

Media for the people? A group of social entrepreneurs is launching a new initiative that advocates say could result in a better, more diverse media.

The Citizens Media Fund, a project of the Mill Valley-based Venture Collective, is recruiting influential alternative voices, including AlterNet, Mother Jones, and Utne, to help create a funding source for independent media.

For more information, visit www.mediaventure.org/ctzn_home.html?id=250



REGISTRATION



CONFERENCE UPDATE

The 2004 Kansas Professional Communicators Conference is just two months away!

Mark your calendar and plan to attend!

DATES

May 7 • Board meeting
May 8 • Conference & Awards Banquet

LOCATION
Abilene

ACCOMMODATIONS

Abilene Holiday Inn Express
Rooms \$70 plus tax
785-263-4049 for reservations
(Say you're with KPC for above rate)

PATRON/SCHOLARSHIP LUNCHEON

Noon
Kirby House

AWARDS BANQUET

7 p.m.
Brookville Hotel

Watch for your official conference information/registration in the mail next month!

Watch for our new news sheet in April!

Contests, conferences and seminars...



REGIONAL MEETINGS

FLINT HILLS PRESS WOMEN

First Thursday evening of the month
Junction City or Abilene
Time and location vary.
Contact Gail Parsons
785-762-5000
flinthillspresswomen@yahoo.com

WICHITA PROFESSIONAL COMMUNICATORS

First Wednesday of the month
Botanica, 701 Amidon
11:30 a.m.
(Lunch service begins at 11:15 a.m.)
Members: \$9 / Students: \$5.50
Visitors: \$12
Contact Becky Funke
316-942-5385

Have the winter blues? Below are a few opportunities to dig out of the humdrums.

KANSAS VOICES CONTEST

Deadline: March 15, 2004
Eligibility: Unpublished poetry or short stories by Kansas residents
Entry Fee: \$3 for each poem or prose submission
Entry forms or more information: www.iwinfield.net/~wahc/events.htm

TEXAS PRESS WOMEN ANNUAL STATE CONFERENCE

Date: March 26-28, 2004
Where: Baylor University campus
What's included:

- Ninety-minute workshop by the National Press Foundation, based in Washington, D.C.
- Breakout sessions, each 45 minutes, led by speakers who include a freelance writer/author; a public relations representative from Southwest Airlines; the editor of the Waco Tribune-Herald; Baylor University's director of Media Relations; and a former media relations director for the Waco Chamber of Commerce who handled the media when President Bush was in town.

Questions or to register: 254-757-5753

CAROLINE BANCROFT HISTORY PRIZE 2004

Deadline: April 15, 2004
Eligibility: Entries must be books copyrighted in 2003, a minimum of 100 pages in length and written in English. The area of consideration is any aspect of the trans-Mississippi West, Alaska, Hawaii, and the Mexican and Canadian borderlands, from prehistory to the recent past. A publisher must submit the entry.
Questions or more information: 720-865-1906 or e-mail trand@denver.lib.co.us

MEDIA AND THE LAW SEMINAR

Date: Friday, April 30, 2004
Where: Fairmont on the Plaza, Kansas City, Mo.
Topic: "Reporters Under Fire" Sessions include embedded journalists; Jayson Blair, media liability insurance issues; and Gerald Boyd, former *New York Times* managing editor and recognized leader in journalism.
Questions or to register: 877-404-5823 or www.kuce.org/programs/ml



BOARD MEMBERS

Jane Lee, APR, President
620/662-0076

Teresa Veazey, VP Membership
316/978-6462

Carrie Dvorak, Second VP Bylaws
913/583-3400

Sue Novak, Treasurer
785/272-8681

Jennifer Latzke, Secretary
800-452-7171, ext. 1807

Gail Parsons, Contest

Carol Hockersmith, COA

Jeff Goudie, Historian

Sheila Lucia, Newsletter Editor

Grace Wilson, Parliamentarian

Liz Kennedy, Patrons Chair

Judy Conkling, Publicity

Becky Funke, Scholarships

Amy Eck, Youth Contest

← WANT TO JOIN KPC? CALL TERESA, OUR VP OF MEMBERSHIP!

NITTYGRITTY

CommuniKPC is a quarterly publication of Kansas Professional Communicators, an affiliate of National Federation of Press Women.

KPC President
Jane Lee, APR
P.O. Box 2767
Hutchinson, KS 67504-2767
620-662-0076
E-mail: jane@janeleecomm.com

Next news deadline:
May 14, 2004

Send news items to:
Sheila Lucia, Editor
P.O. Box 2767
Hutchinson, KS 67504-2767
620-662-0076
Fax: 620-662-1221
E-mail: sheila@janeleecomm.com

RETURN SERVICE REQUESTED

Hutchinson, KS 67504-2767
P.O. Box 2767



PERMIT NO. 227
HUTCHINSON, KS
PAID
U.S. POSTAGE
FIRST CLASS